

LINETESTLAB

Berkley

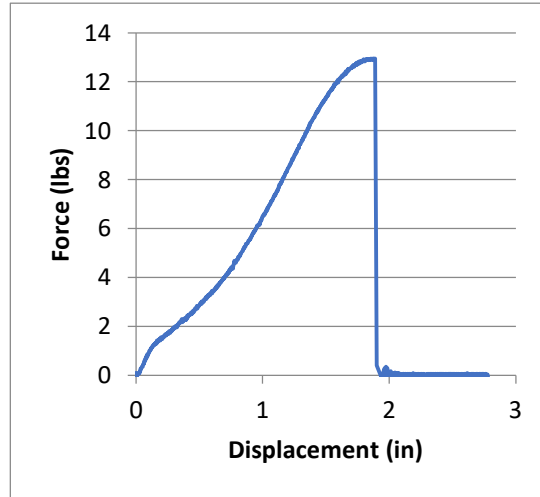
Trilene Big Game

Monofilament

10lb

Tensile Test Results

Capacity	Force (lb)	Stretch%
10%	1lb	5.2
20%	2lb	16.0
30%	3lb	26.6
40%	4lb	35.8
50%	5lb	42.4
60%	6lb	48.6
70%	7lb	54.6
80%	8lb	59.6
90%	9lb	64.6
100%	10lb	69.2
MAX	12.94	94.4
Average of 5 Tests		



Palomar Knot Test Results

Average Break Force (lb)	13.0
Average of 5 Tests	

Line Thickness

Average Thickness (in)	0.0121
Average of 5 Tests	

Abrasion Test Results

Average Time To Break (sec)	70.3
Average of 5 Tests	

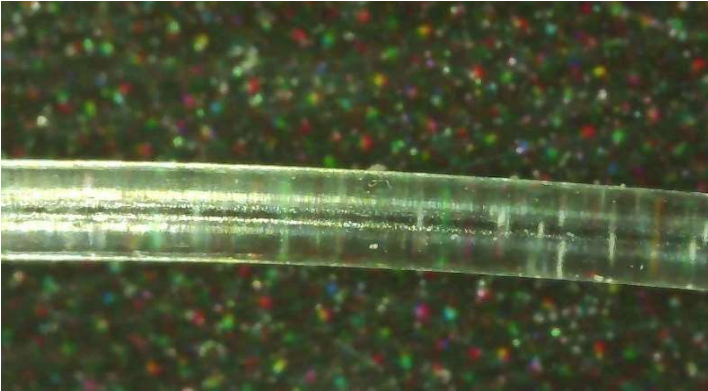
Test Notes:

It's an old roll of line I had. I wanted to compare it to the Zebco Cajun Line 10lb

Cajun line tested a little stronger but this line is more subtle.

Test Images

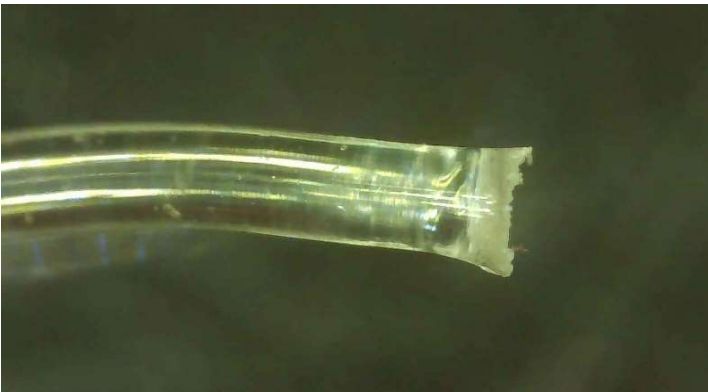
Normal Photo



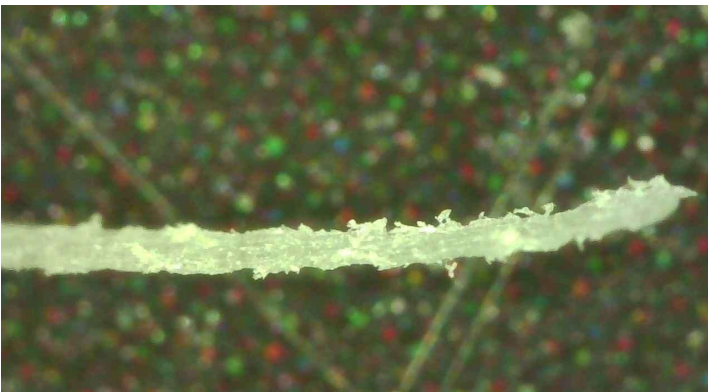
Knot Break Photo



Tensile Test Break Photo



Abrasion Break Photo



Product Photo

